

Magic Life

SHARING EXPERIENCES

In this edition

- Celebrating the
- Remarkable Women
- of Magic Life on
- International
- Women's Day
- Head Office News
- Diamond Jubilee at Bruce Grove
- February's Individual Triumphs at 171 Harringay Road
- Embracing New Beginnings: A Remarkable February at Greyhound Road
- Harmony Heights: Celebrating Our Stars at 672 High Road
- Embracing New Beginnings: A Remarkable February at Burlington Lodge
- February Fantastic Meals
- February Festivities and Warm Welcomes at Cherry Tree Lodge: A Month of Joyful Connections
- A Chronicle of Progress and Wellbeing
- Celebrations
- & Creativity
- at Northlands
- Chronicles of Park Lodge: Where Memories and Adventures Collide
- Month of Love
- At Park Side
- Celebrating Adult Age With Style At The Chapel
- Pancake Day Celebration at The Hampton: A Joyful Gathering of Staff and Residents
- Marvellous Month At Winns Mews 2
- Celebrating Independence & Community Spirit at Winns
- William's 34th Birthday Bash at Winns Mews 4: A Celebration of Resilience and Community
- A Heartfelt 21st Birthday at 6 Winns Mews
- February Flourish
- Mothers Love



Celebrating the Remarkable Women of Magic Life on International Women's Day



As the world comes together to mark International Women's Day on the 8th of March 2024, we at Magic Life UK take immense pride in shining a spotlight on the exceptional women who form the backbone of our community. This special day, rooted in a century-long history of advocating for women's rights and equality, resonates deeply with our values of inclusivity, respect, and empowerment.

Our female staff members, from care providers to administrators, embody the spirit of dedication and compassion. They are not just employees but pillars of strength who uplift and inspire those around them. Their unwavering commitment to providing outstanding care and support to our residents highlights the critical role women play in the healthcare sector, often being at the forefront of innovation and empathetic service.

The women of Magic Life UK are as diverse as the roles they fill, each bringing a unique perspective and set of skills to the table. They are leaders, caregivers, problem solvers, and, most importantly, advocates for the residents we serve. Their contributions are invaluable, not just in their professional capacity but in the warmth and joy they bring into the lives of everyone at Magic Life UK.

On this International Women's Day, we extend our heartfelt gratitude and admiration to all the women in our community. Their resilience, empathy, and leadership continue to inspire and drive positive change within Magic Life UK and beyond. We are proud to stand alongside them, today and every day, in celebrating their achievements and contributions to making the world a more inclusive, caring, and equitable place.

To all the incredible women of Magic Life UK and around the globe, Happy International Women's Day! Your strength, courage, and compassion light the way forward, and we are honoured to celebrate your excellence and achievements.

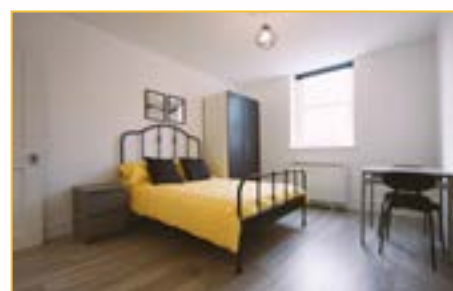


New starters at Magic Life

We would like to welcome all new staff members to Magic Life over the last month. We would also like to welcome Gladys Turner our newest Service Manager. Gladys to be taking the reins of our new start in Cheshunt. The service will be called the White House. This not a reference to The White House in the USA but so called due to its white exterior. So please give Gladys a warm welcome to Magic Life

The White House Our Newest Home In The Heart Of Cheshunt

We soon be welcoming residents to our newest home. The White will provide support for eight residents. The home offers eight self contained rooms each with a kitchen and en-suite bathrooms. There are different room sizes and one of them covers the whole of the top floor.



INTERESTED IN THE HOME?

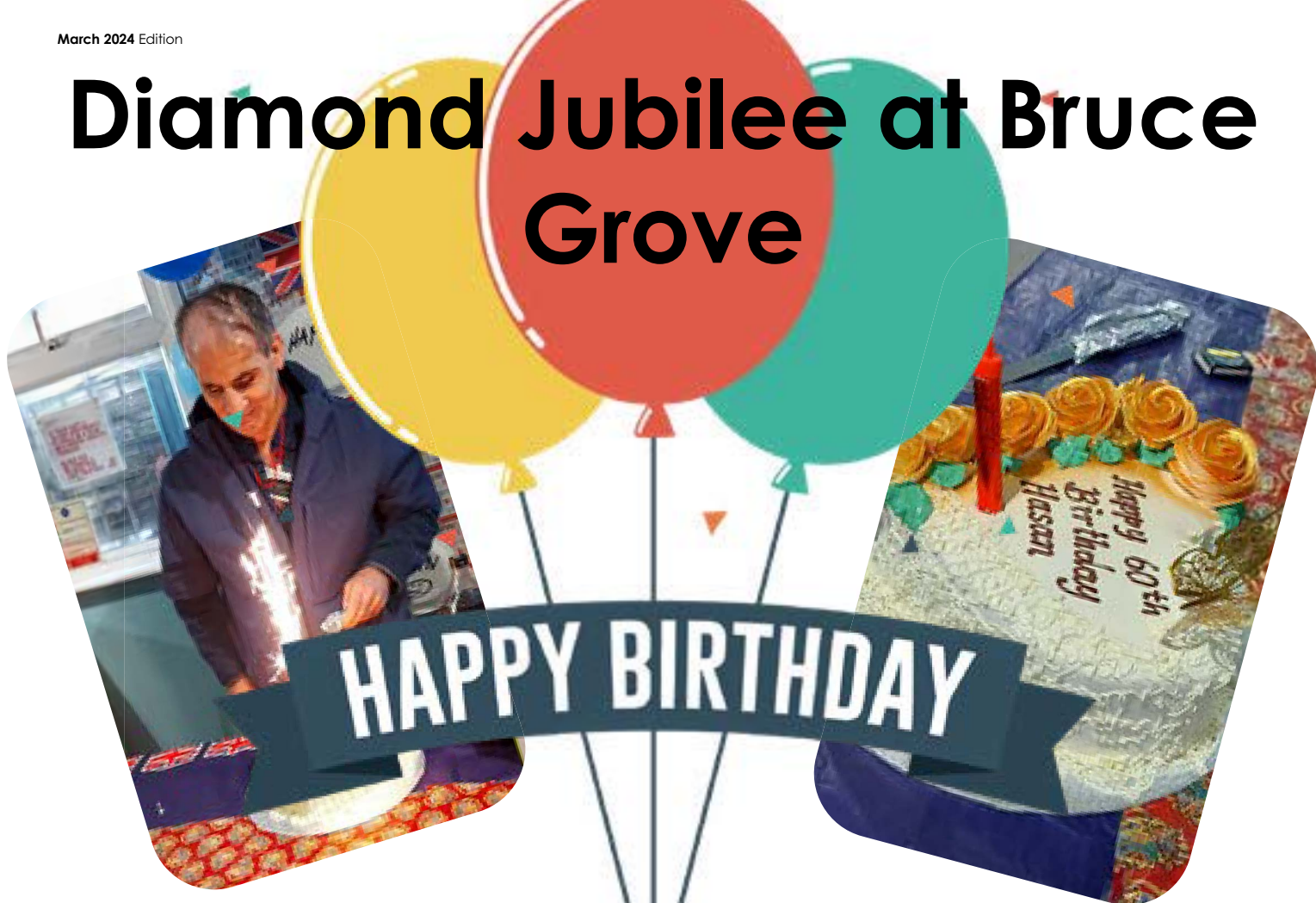
Make A Referral, Call Our Team
On 0208 826 4348
Or Email Us
referrals@magiclifeuk.com



Magic Life UK

Supporting People

Diamond Jubilee at Bruce Grove



Hasan Celebrates his

As a society, we tend to make each our age is a zero more significant than landmarks signal the conclusion of one decade define ourselves and, perhaps more importantly, 60th birthday signalled the start of senior status. work well into their sixties, 60 is still a significant customs linked with this birthday.

big day at Bruce Grove

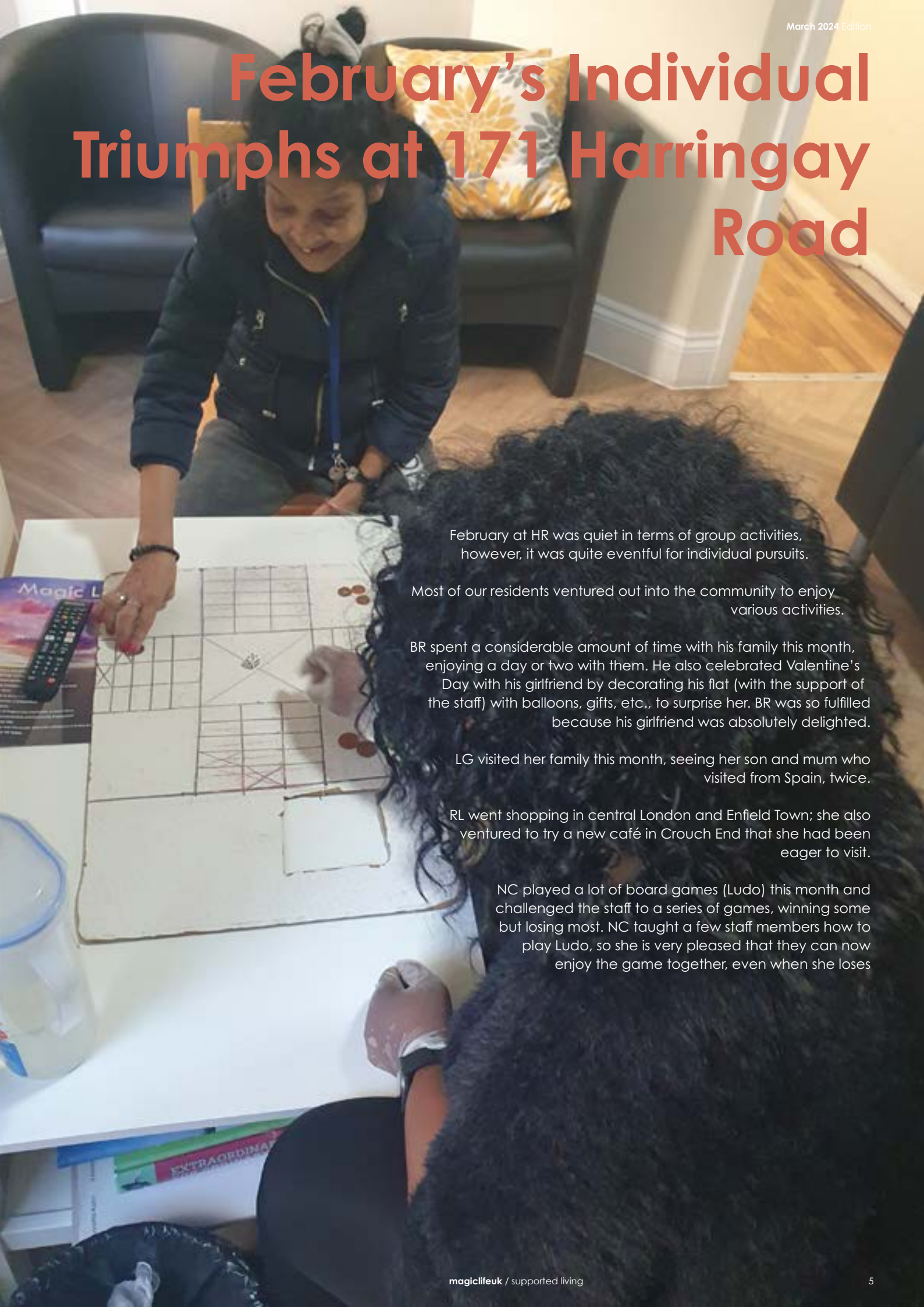
birthday where the second number in the birthdays in subsequent years. These and the start of another. As adults, we tend to how others perceive us. In many societies, the Although many people continue to be active and milestone, and there are several traditions and

In Western tradition, 60th birthdays are sometimes marked with tongue-in-cheek 'Over the Hill' celebrations. Age-related jokes are unavoidable, and nostalgic gifts are frequently given. Partygoers may choose to bring vintage photos or souvenirs from the guest's birth or childhood. In China, enormous parties are held for people in each decade of their lives, beginning with their 60th birthday. Life expectancy was originally significantly shorter and living to be 60 was a reason for great joy. Guests wish the 60-year-old a long life and deliver symbolic gifts, such as long noodles to represent longevity. In Japan, the 60th birthday is referred to as 'kanreki.' This day is customarily celebrated with a celebration in which the guest of honour is clothed in red, the same colour as infants. Food options may include freshly made mochi, a type of sticky rice cake. In Korea, a 60th birthday is known as 'Hwan-gap.' Guests are seated at a dinner table in order of age. Then, beginning with the youngest, the youngsters will bow to their elders and pour them wine.

At Magic Life, we ensure every birthday, and every milestone, is celebrated and not missed. As a caring community, we ensure that every milestone is carefully tailored to the individual's needs and the success remains memorable. HC has been at Bruce Grove since August 2016 and has marked every birthday at the service with staff, service users, cakes, food, drinks, and music. However, this year's birthday was different as it was his 60th. Over the years, HC has improved greatly in his daily living; he is more independent, enjoys playing games, and his level of capacity and independence has increased greatly. He enjoys going to Turkish restaurants, listening to music, and interacting with staff and service users. The age of 60 is no longer considered old in today's world; in fact, it is often said that 60 is the new 40 because one feels younger and life expectancy has increased significantly. Prior to his 60th, HC had told staff he didn't want much beyond a cake, and just having other service users and staff sit with him and reflect on life would suffice. A cake was gotten for him as he requested; he had a lovely time chatting with staff and other service users about life and how he feels about turning 60. They chatted, cracked a few jokes, and had a great time. HC said, 'He is grateful and each day he looks forward to enjoying it.' We wish HC all the best and that he continues to be passionate about being in the moment and enjoying life to the fullest.

WORDS / PHOTOS BY EMEM EKANEM

February's Individual Triumphs at 171 Harringay Road

A woman with dark hair tied in a bun, wearing a dark blue jacket and a lanyard, is sitting on a wooden floor. She is leaning over a large board game, which appears to be Ludo, laid out on a white surface. She is smiling and looking at the game. In the background, there is a black leather armchair with a yellow and white patterned cushion. A large, dark, curly wig is placed on the floor next to the game board. A remote control and a book titled 'Magic L' are also visible on the left side of the board.

February at HR was quiet in terms of group activities, however, it was quite eventful for individual pursuits.

Most of our residents ventured out into the community to enjoy various activities.

BR spent a considerable amount of time with his family this month, enjoying a day or two with them. He also celebrated Valentine's Day with his girlfriend by decorating his flat (with the support of the staff) with balloons, gifts, etc., to surprise her. BR was so fulfilled because his girlfriend was absolutely delighted.

LG visited her family this month, seeing her son and mum who visited from Spain, twice.

RL went shopping in central London and Enfield Town; she also ventured to try a new café in Crouch End that she had been eager to visit.

NC played a lot of board games (Ludo) this month and challenged the staff to a series of games, winning some but losing most. NC taught a few staff members how to play Ludo, so she is very pleased that they can now enjoy the game together, even when she loses



Embracing New Beginnings: A Remarkable February at Greyhound Road

Greyhound Road has undergone a remarkable transformation this February, marked by celebrations, resilience, and new beginnings. From milestone birthdays to triumphs over mental health challenges, the spirit of growth and positivity has been palpable. And let's not forget the adorable addition of Alfie the Rabbit, bringing joy and companionship to the home.

Throughout the month, residents and staff alike have indulged in the pleasures of good food, reflecting the essence of a true foodie household. From savouring delectable pancakes on Shrove Tuesday to enjoying pizza nights fit for beauty pageants, every palate has been delighted and every moment cherished.

Nature's breathtaking displays of sunrise and sunset have served as a backdrop to the collective anticipation of new opportunities each day brings. With each dawn, there's a renewed sense of excitement for the adventures and challenges that lie ahead, fostering a culture of continuous growth and evolution.

Indoor activities have fostered camaraderie and friendly competition, from learning dance moves to engaging in spirited sing-alongs. Who knew a simple bottle game could ignite such fervour, with residents outshining the staff in their quest for victory?

The dedication and compassion of the staff have been nothing short of inspirational, going above and beyond to ensure every resident had a memorable experience. A special

commendation is due to one resident who has exhibited remarkable courage and determination on her journey towards a new path. Her journey serves as a beacon of inspiration to all, reminding us of the power of resilience and the potential for growth in every challenge we face.

As February draws to a close, Greyhound Road stands as a testament to the transformative power of community, resilience, and the pursuit of new beginnings. Here's to embracing the journey ahead with open hearts and unwavering determination.

BY EVIE & CANDACE
PHOTOS BY ISTAR & PATIENCE





Harmony Heights: Celebrating Our Stars at 672 High Road

At 672 High Road, the embodiment of a person-centred approach has been magnificently realised, thanks to the unwavering dedication of the staff. The exemplary teamwork between support workers and management ensures the delivery of quality service that caters to the unique needs of each resident.

Highlight of the month is Dennis Owusu, a commendable member of the staff who has shown exceptional commitment. Dennis has worked closely with resident CK, ensuring the fulfilment of a long-standing family request. Every Monday, Dennis supports CK to enjoy swimming sessions, which has greatly enhanced CK's routine and wellbeing.

Moreover, resident CB has been actively engaging in weekly shopping trips, diligently organising his groceries with remarkable independence. His excursions to the Science Museum in South Kensington and the zoo in Hertfordshire have been joyous adventures, complemented by his love for karaoke and piano sessions in his flat.

Resident CM's involvement in shopping and cooking activities showcases significant strides towards autonomy, while his regular park walks are a testament to the fostering of a healthy lifestyle.

CK's culinary sessions and contributions to maintaining the residence, including cleaning the stairs, reflect a growing sense of responsibility and engagement.

DF's settlement into life at 672 High Road is a story of contentment and harmony. Taking pride in his flat, DF ensures it is well-kept, occasionally seeking assistance which staff are always ready to provide. His passion for cooking is shared with support workers, creating opportunities for culinary exploration and skill development.

Lastly, SSS's fondness for social interaction within the Courtyard and beyond in the community walks embodies the vibrant and inclusive spirit of 672 High Road.

The individual accomplishments and collective harmony of the residents at 672 High Road are a beacon of Magic Life UK's commitment to enriching lives and fostering independence. This month's review celebrates these shared moments of growth, learning, and happiness





Embracing New Beginnings: A Remarkable February at Burlington Lodge

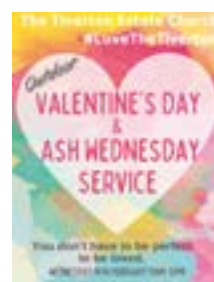
February might have seemed quiet due to the relentless rain, but inside Burlington Lodge, the atmosphere was alive with activity. Cooking, baking, indoor sports, music, and dancing – along with singing competitions – provided entertainment and relaxation.

The Valentine's Day celebrations were filled with laughter and festivity. Burlington Lodge was invited to participate in the Outdoor Valentine's Day and Ash Wednesday events. We honoured the invitation with a spectacular musical show by Sam, one of our service users. He took the microphone and sang beautifully, earning admiration from the attendees, who were primarily from the Tiverton Estate Church and the local community.

The highlight of the month was the ongoing presentations by the two Communication Champions of Magic Life. They involved all staff in learning

and signing Makaton, enhancing the sign language skills of the residents. It has been a captivating scene to witness. The champions are on a mission to develop the Lodge into a hub of visual communication, hoping the service will provide all the necessary support to continue translating their expertise and experience into tangible and visible projects.

We extend our best wishes to everyone at Burlington Lodge and Magic Life as a whole as we strive to create a healthy, safe, and supportive environment for our cherished residents.



February Fantastic Meals

Celebrating a Milestone: ST's Golden 50th Birthday Bash on the 23rd of February" Happy Birthday

February has been a month filled with activities for the ladies at GPR. EL celebrated her birthday in December, and the staff supported her in baking some Jamaican rum cakes, which were so delicious that a few weeks ago, EL decided to bake some more. She purchased all the ingredients needed, and the staff helped her create some beautiful cakes. EL, along with the other residents and staff, enjoyed the treat.

On the 13th of February, the staff put their skills to the test and created some perfectly formed pancakes which were served with a selection of toppings. There were fresh strawberries

and raspberries, which went well with a drizzle of maple syrup or powdered

sugar and a dash of lemon juice – YUMMY.



Ella celebrated her birthday with a full English breakfast, complete with all the trimmings. The staff also baked her some golden Victoria sponge cake, accompanied by some sweet, mouthwatering cupcakes. All the residents enjoyed the meals provided, and ET was very appreciative of the effort the staff had made for her.

WORDS BY DOREEN PHOTOS BY AYESHA, HAWA & DOREEN

February at Cherry Tree Lodge was a whirlwind of excitement, bringing a surge of bustling energy and heartwarming moments. From welcoming a new member to indulging in a plethora of activities, it was truly a month to remember.

Residents' Activities:

Our residents engaged in a wide array of activities, fostering bonds and creating cherished memories. From lively karaoke sessions to delectable cooking, every moment brimmed with joy and laughter. Julie dazzled us all with her shopping spree, while Chris enjoyed exploring the Historic Croydon Airport Trust, and Roberto showcased his fresh haircut. Together, they revelled in the simple pleasures of life, strengthening the sense of community that defines Cherry Tree Lodge.

The New Face of our Belle, Julie:

Join Us to Welcome Stuart to the Magic Life Family!

Amid all the excitement, we welcomed a new resident to our cherished community – Stuart. As he settled into his beautifully decorated flat, surrounded by warmth and support, we extended our heartfelt greetings and reassurance. Transitioning to a new home can be daunting, especially after 12 years in a previous residence, but with the unwavering support of our residents and staff, Stuart is set to embark on a journey filled with joy, companionship, and endless possibilities.

As we look forward to the adventures that lie ahead, we remain committed to fostering a vibrant community where every resident is cherished, celebrated, and empowered to lead their best life. Here's to many more unforgettable moments in the days to come!

February Festivities and Warm Welcomes at Cherry Tree Lodge: A Month of Joyful Connections

Our dear Julie brought a touch of glamour to February with her stylish new haircut, radiating confidence and charm as she embarked on her fitness and shopping adventures. Her infectious spirit uplifted us all, reminding us to embrace life's little indulgences with gusto. And who could forget the melodious tunes echoing through the halls, courtesy of none other than Julie herself?

Amazing Time with Chris at the Historic Croydon Airport Trust:

Chris embarked on a captivating journey through history at the Historic Croydon Airport Trust, immersing himself in tales of aviation glory and technological marvels. His enthusiasm was palpable as he explored the museum, enriching his understanding of this magnificent edifice.

Valentine Special Dinner:

Love was in the air at Cherry Tree Lodge as residents came together to celebrate Valentine's Day with a sumptuous dinner and heartwarming festivities. From delectable treats to friendly games and heartfelt conversations, it was a night to cherish, reaffirming the bonds of friendship that define our community.







A Chronicle of Progress and Wellbeing

Project Overview

The service has been fully engaged with the daily routine. Residents have participated in their routine appointments and general activities. Professional visitations have been ongoing to support our individuals. Staff training is in progress to meet the recommended requirements. There has been a replacement of beds, wardrobes, doors, and general maintenance work has been carried out. Staff are dedicated to the development of the service and the wellbeing of our residents. The service has welcomed visits from families and friends.

SH

SH enjoyed visits to Rickmansworth this month with his mother, taking in the scenery and observing swans. He was supported in attending both away and home football games by staff or his mother. SH has completed his routine health check this month and is looking forward to future appointments. His professional team in Hertfordshire is collaborating effectively with our service.

JO

The entire professional, staff, and management teams have provided support for JO's ongoing development. He is preparing for a new opportunity at a gardening centre to enhance his skills. JO has been consistently supported in his community engagements and has fulfilled several appointments as part of his development plan. Furthermore, there have been updates to his living accommodations, contributing positively to his environment. His commitment to daily community activities remains strong.

GS

GS continues to make strides in his personal wellbeing. The staff have been supporting him with his daily routines. He has attended his routine health and dental checks. His employment at a weekend restaurant job is progressing, with the possibility of increasing his hours. He has been active in house meetings, key working sessions, and socialising with peers. Additionally, GS has been pursuing educational opportunities, which are still in the early stages. He remains focused on skill development both at work and within the service.

LF

LF's journey since joining Magic Life has been remarkable. He has gained independence in meal preparation and maintains a positive rapport with staff and professionals. LF has been continuing with his routine healthcare appointments. He has regular visits from various professional services, contributing to his steady progress. LF's integration into community activities has been a success, with his stability and happiness being paramount at the service.

Celebrations & Creativity at Northlands

This month at Northlands has been bustling with several celebrations. The staff cooked a delightful meal to mark a successful audit, an event in which our residents also participated. Additionally, we indulged in a wonderful Valentine's Day celebration, complete with a scrumptious meal and a beautiful cake for everyone.

Charlotte and Lucy have been embracing the fun, visiting a trampoline park and enjoying some pampering with nail and makeup sessions. Charlotte also had a splendid day out with her staff, featuring a shopping trip to Primark, a pleasant lunch, and an enjoyable time at the arcade.

Lucy has made notable progress and has been actively involved in our gardening project with CB. They've started sowing seeds in pots, nurturing them to flourish before they adorn our garden, transforming it into a sanctuary of luscious vegetables and vibrant flowers that will add a splash of colour.

Some of our residents have also taken part in making pancakes, and it was particularly heartwarming to see Louise participating. Tabi has baked some delicious cupcakes and has constructed an impressive little house and office, which, considering its size, is quite extraordinary.

Overall, it's been a wonderfully active and pleasant month at Northlands.



Chronicles of Park Lodge: Where Memories and Adventures Collide

Chronicles of Park Lodge: Where Memories and Adventures Collide

In the heart of Park Lodge, time dances to the rhythm of whispered tales and echoes of laughter. Here, adventure and remembrance intertwine; each path, each corner holds a story awaiting its voice. Journey with me through the hallowed grounds of Park Lodge, where every step pays homage to the adventures lived and the memories cherished.

This month has been nothing short of extraordinary as our team embarked on a series of adventures with our cherished residents. From the bustling streets of London to the breathtaking heights of Gravity Wandsworth London, where our dedicated staff provided unwavering support to our residents as they conquered challenges and embraced the thrill of adventure with boundless energy. Every moment bore testament to the resilience and determination of our residents.

Next, we ventured to the iconic London Cable Cars, where our team ensured that every resident felt safe, empowered, and supported as they soared above the city's skyline. With laughter echoing through the air and hearts brimming with joy, our residents conquered their fears and revelled in the exhilarating experience.

In Brighton, amidst the salty sea breeze and the sun-kissed sands, our team orchestrated a day brimming with smiles. From leisurely strolls along the pier to lively conversations over ice cream cones, each moment was infused with a sense of belonging and togetherness that united our hearts.

But the adventures don't end there. A shopping spree at Wood Green Shopping Centre and an indulgent feast at Edmonton HI Wok brought our community together. As our residents navigated the aisles with enthusiasm and excitement, our team stood by their side, offering support and encouragement every step of the way.

What truly made these experiences remarkable was witnessing the boundless joy and willfulness of our residents. Their laughter resonated through each moment, their spirit shone brightly with every smile, and their willingness to embrace life to the fullest was nothing short of inspiring.

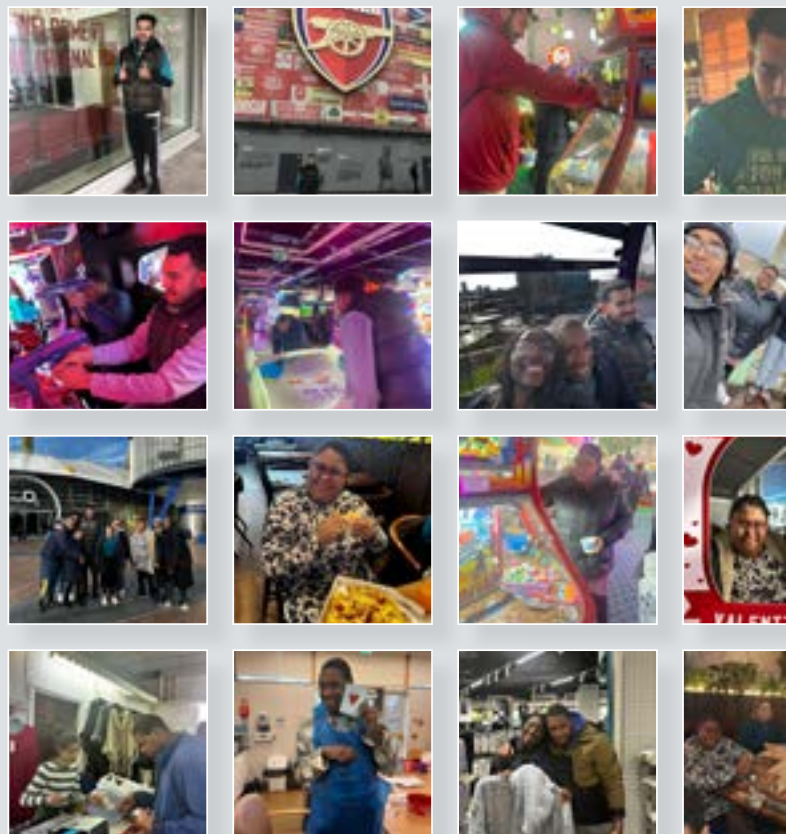
As we take a moment to celebrate the achievements of our team this month, we must highlight the outstanding contributions of Andrea Carlin. Andrea's unwavering dedication and hard work have been exemplary. Whether

going the extra mile to ensure the comfort and well-being of our residents, Andrea, we thank you for your dedication and for being an integral part of our success.

As we reflect on the accomplishments of our team and the splendid work they have achieved, we are reminded that inclusivity is not just our goal but our way of life. Together we have created a community where everyone is valued, celebrated, and empowered to live their best lives. For that, we are profoundly grateful.

Write By:
Amieda Koroma

Photography Credits
Amieda Koroma, Sylvia Ogundipe, Pretty Bhinda
Tanvir Shuvo, Olubunmi Abiodun & Andrea Carlin





Month of Love At Park Side

Pancake Day

February is renowned as a time for expressing love and care towards everyone. PC ventured to Alexandra Park to extend her affection to the ducks and birds, radiating joy and enthusiasm in her communion with nature.

On the 13th of February, both staff and residents came together to celebrate Pancake Day. The team guided the residents through the process of mixing and frying pancakes. Some savoured their pancakes as wraps filled with salad, chicken, and salad cream, while others delighted in chocolate and strawberry spreads.

Valentine's Day

The 14th of February marked a special celebration at Parkside, where we hosted a Valentine's Day party for all residents and staff. The home was adorned with symbols of love, and everyone dressed in their finest red and white attire. The feast included roasted chicken, pork, potatoes, rice, potato salad, and a vegetable salad. The day was filled with joy, music, and dancing, leaving everyone with cherished memories.

The Love of a Mother

A week post-Valentine's, PC received concerning news that her mother had been admitted to the hospital due to a severe health issue. Management promptly arranged transportation for PC to visit her mother. The reunion was heartwarming; her mother's happiness was palpable as they held hands until PC's departure. Relieved to see her mother on the mend, PC made plans to visit again in the following days.





Celebrating Adult Age With Style At The Chapel

Indigo celebrated her 18th birthday with a touch of pink. Her flat was decorated with pink coloured greetings on the walls and in every room in her flat, pink balloon and the biggest greetings card ever, as Indigo commented. All the staff that worked on this day wore pink that delighted the celebrants. Indigo was overwhelmed with so many presents and warm greetings from everyone.

A trip to Brighton Pier was the highlight of her celebration, which she planned to have with other service user Ryan. In addition to the stylish celebration, Indigo was also supported to spend a day with Ryan in Harlow where they both enjoyed a day filled with fun activities like bowling, arcade and of course having a treat at the cream house.

Indigo and Ryan both enjoying each other company. They are now inviting each other when they want to access the community, go out shopping, stroll or enjoy swing, slides and trampolining at the park.





Pancake Day Celebration at The Hampton: A Joyful Gathering of Staff and Residents



At The Hampton, the spirit of community and celebration is alive and thriving. As Pancake Day approached, anticipation filled the air, and both staff and residents eagerly prepared for a day of festive indulgence and camaraderie.

On the morning of Pancake Day, the aroma of freshly cooked pancakes wafted through the corridors, igniting excitement among everyone in the facility. The kitchen was a hive of activity, with staff members skilfully flipping pancakes on griddles while residents eagerly awaited their turn to join in the culinary festivities.

As the pancakes sizzled and turned golden brown, laughter and cheerful chatter filled the air. Residents gathered around tables adorned with an array of colourful fruits, eagerly anticipating the opportunity to decorate their pancakes with strawberries, blueberries, bananas, and more.

For many residents, Pancake Day was not just a culinary celebration but also a cherished tradition that brought back fond memories of family gatherings and shared meals. As they carefully crafted their pancake masterpieces, smiles lit up their faces, and the joy of the occasion was palpable.

Staff members lent a helping hand, offering assistance and encouragement to residents as they created their edible works of art. Together, they formed a supportive and inclusive community, where everyone felt valued and included in the festivities.

Once the pancakes were adorned with a delightful array of fruits, it was time to indulge in the delicious creations. Residents and staff alike savoured each bite, revelling in the flavours and textures of the lovingly prepared pancakes.

As the celebration drew to a close, the sense of camaraderie and togetherness lingered in the air. Pancake Day at The Hampton was not just about indulging in sweet treats but also about coming together as a community, sharing laughter, and creating cherished memories that would last a lifetime.



Marvellous Month At Winns Mews 2



This month, the 2 Winns Mews project has been splendid, with all the residents engaging enthusiastically in the array of activities provided and fostering closer connections with one another.

A highlight at the service was Valentine's Day, which emerged as a tremendous success. Such a day could not pass unacknowledged, as it was an occasion for everyone to feel loved and cherished. This sentiment was certainly reflected on the day, with the staff offering delectable Valentine's Day-themed cupcakes

to all. Furthermore, pizza was also served, which truly brought the spirit of love to everyone! It was undeniably a Valentine's Day that Winns Mews will remember fondly.

The month has been filled with enjoyable activities. The 4-sport Games Table, now a firm favourite at the project, has been occupied constantly since its arrival! Watching the residents play with boundless enthusiasm has been an absolute joy. Pool has become the most favoured sport, capturing the interest of all residents. The level of engagement

has been phenomenal!

Lastly, RT has had an exceptional time this month, as he managed to visit the cinema. As a fervent film buff, he revels in the experience, not just for the film itself but also for the delightful snacks. He had the opportunity to watch 'Aquaman', which proved to be a fantastic choice for him. He is eagerly anticipating the next cinema outing.

Words and photos by: Isaac Amaning
Position: Senior Support Worker

Celebrating Independence & Community Spirit at Winns



Winns 3 had a bustling month; we savoured food and cupcakes, festooned the lounge for Valentine's Day, and revelled in the celebration! Lianne will be departing Winns to embark on a journey of independent living. Rather than casting a shadow over the event, we commemorated her tenure with a surprise farewell party! Lianne was oblivious to the clandestine preparations.

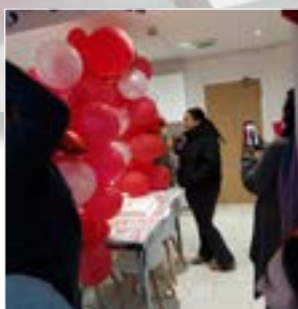
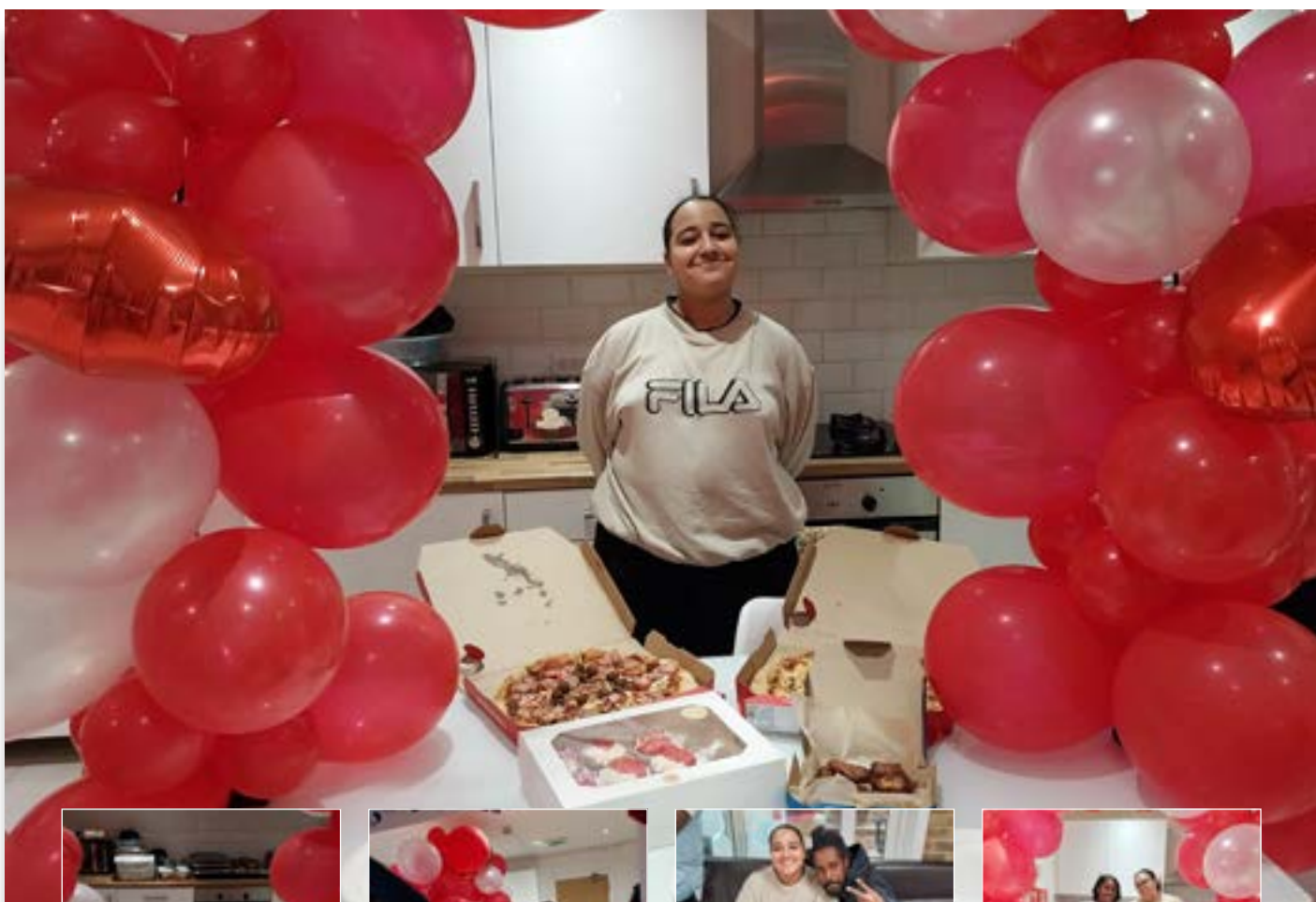
The Winns community united to craft delightful pancakes; Naima made pancakes while residents chose their favourite toppings.

Every staff member pitched in by preparing some of LC's preferred dishes, accompanied by an assortment of beverages and cake. The entire Mews gathered to join LC

in celebration, showering her with abundant good fortune and heartfelt wishes for her forthcoming adventures.

MF was present at LC's farewell celebration, delivering a stirring speech brimming with encouragement and shared how LC had inspired her. MF indulged in the feast and had a splendid time with friends from the other Winns Mews.

This month, Winns hosted a girls' club. The young women baked cupcakes and pizza from the ground up, with residents from various projects coming together to delight in the event. Shamar and Leslyn captured exquisite photographs of the residents. Together with Rose, they adorned the communal space for each festivity



Birthdays mark a significant milestone in an individual's life, offering an opportunity for reflection and celebration. At Winns Mews, we ensure that each resident's birthday is a memorable event, acknowledging the profound personal importance of these moments for both residents and their families.

Recently, WT celebrated his 34th birthday on Wednesday, 7 February, surrounded by fellow residents and staff. The afternoon's festivities were held in the lounge and featured a delightful array of cakes, food, and drinks. The team at Winns Mews recognises that celebrating birthdays is not just about a single day of festivities; it reflects our ongoing commitment to nurturing the well-being of our residents.

The approach of someone's birthday at Winns Mews is always an exceptional time, fostering anticipation for the upcoming celebration. William joined Winns Mews in August 2023, after facing the challenges of a rough sleeping lifestyle and life's hardships. His initial difficulties in settling in have been met with perseverance and understanding. Sleeping rough exposes individuals to severe weather conditions, making them vulnerable to abuse and infection. William's move to Winns Mews marks a positive transition, ensuring he receives care tailored to his needs, a warm home, opportunities to forge friendships, and meaningful engagement. His birthday celebration with dancing, karaoke, and the warmth of friendship—was a testament to how far William has come and a look forward to the future.

By Amanda

and Martins.

William's 34th Birthday Bash at Winns Mews 4: A Celebration of Resilience and Community





A Heartfelt 21st Birthday at 6 Winns Mews

There are many moments in our lives that will be remembered, and those moments become memories and milestones that occur once in a lifetime. Think back to the array of feelings and emotions you experienced when you turned 21. Were you excited? Were you scared? For some of us, recalling that feeling is a bit challenging, so figuring out how to wish someone a "Happy 21st Birthday" might seem tough, but that's perfectly okay because we've got you covered. Cheers to being 21!

Morgan celebrated her 21st birthday with the staff and DM at the service, and her mother travelled from Maidenhead to be with her on this very special day. Morgan expressed a wish for a private celebration with the staff, her housemate, and her mother, and that's exactly what we did. We laughed, danced, sang, ate, made wishes, and savoured the moment.

Her mum was overwhelmed by the lengths the staff went to just to witness that beautiful smile. It all started in the morning when Morgan opened her bedroom door to find the table set, a candle on her cake, and the sheer joy on her face; she was ecstatic and, of course, very surprised. The staff prepared a lavish banquet for dinner, sparing no effort for Morgan.

She has settled in extremely well since her arrival at the service; her mental health is stable, she is making progress and achieving her goals. We are overjoyed to have her with us and look forward to helping her achieve the goals she so desires to reach. Again, we've got your back, Morgan.

We are truly honoured to be celebrating your 21st birthday with you. Here's to many more blessed years to come.

Happy Birthday!
With love from the 6 Winns Mews Family

Written by Naima Muhamud

✕ The Magic Life
Games Club

**GAME
TIME!**

Starts 14th March 2024

The Fun Starts From 1pm to 4 pm
Winns Mews 2 Every Month

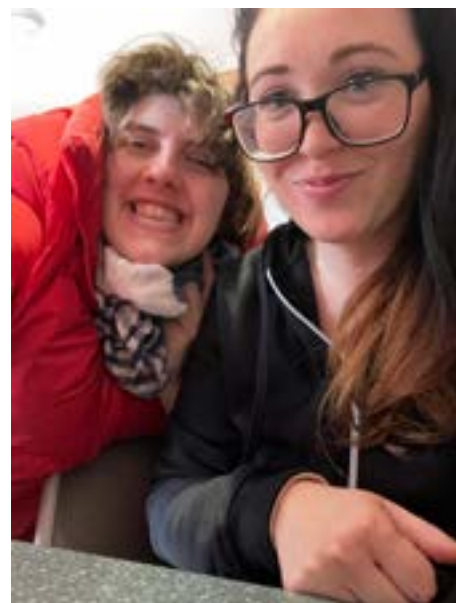


February Flourish

February was a standout month for us at Magic Life UK, filled with moments of joy and unity. We kicked off with a highlight, celebrating Kufre's graduation alongside his proud family. His achievement filled us all with immense pride, encapsulating the supportive spirit we cherish. Love was truly in the air this month, mirroring the essence of February. Our community embraced this warmth, fostering a nurturing environment where everyone felt valued and supported. Diversity and inclusion shone brightly as we explored new cultures, visiting a Hindu temple in Neasden. This visit was not just educational but deeply moving, showing our collective respect for different faiths and beliefs. Pedal Power made a welcome return, bringing everyone together for some fun and exercise. It was particularly heartening to see our newest member, MG, join in and gradually find his rhythm with our support.

February was a testament to our community's strength, celebrating love, achievements, and togetherness. Here's to more enriching experiences ahead!







Mothers Love

MOTHERS DAY CELEBRATION AT HALE END



Locations

Magic Life

Magic Life Head Office

5-11 Green Lanes, London, N13 4TN

Bruce Grove

52 Bruce Grove, London, N17 6RN

Burlington Lodge

21-29 Tewkesbury Road, London, N15 6SE

Devonshire Lodge

139 Devonshire Hill Lane, London, N17 7NL

Greyhound Road

95 Greyhound Road, London, N17 6XR

Grove Park Road

57 Grove Park Road, London, N15 4SL

Harringay Road

171 Harringay Road, London, N15 3HP

High Road Tottenham

672 High Road, London, N17 0AB

Manor Lodge

3 Cedar Close, Potters Bar, Hertfordshire, EN6 1EW

Maple Lodge & Cedar Lodge

271-275 Hale End Road, Woodford Green, IG8 9NB

Northlands

10 Northlands, Potters Bar, Hertfordshire, EN6 5DF

Park Side

Quadrant Court, 2a Park Avenue, London, N18 2UH

Park Lodge

8B Park Road, London, N18 2UT

The Chapel

14 Chapel Row, Bishop's Stortford, CM23 3SE

Winns Mews

2,3,4,5,6 & 7 Winns Mews, London, N15 4FF

The Hamptons

403 Eagle Way, Peterborough, PE78EG

Cherry Tree Lodge

185 London Road, Croydon CR0 2WN, UK

The White House

138 High Street, Coopers Walk, Cheshunt, EN8 0AP

Visit <https://magiclifeuk.com> for further details or our team on 0208 826 4348



Magic Life offer's a range of Services for people who require supported living accommodation

- Learning Disabilities
- Autism
- Mental Health Needs
- Respite
- Acquired Brain Injury
- Behaviours that are deemed to be Challenging
- Physical Disabilities
- Dual Diagnosis
- EUPD Support
- Forensic Support

