

Magic Life

Sharing Experiences

- Magic Champions
- Autism Show
- The Lions
- Patient & Persistence
- Celebration
- Airplanes
- Good Times Come
- Free Ice Cream
- Gym Fit
- New Digs
- Out & About
- Easter At Bushey Park
- Good Vibes
- Dino Delight
- Moving On
- New Chapter
- Eid Celebrations
- Happy Birthday
- Magic Life Locations

Magic Champions

Mandy Sarpong Learning

Mandy@magiclifeuk.com

My name is Mandy Sarpong, and I have been a support worker for Magic Life (Manor Place) for almost three years. Currently, I am a Magic Champion for learning disability, and I am very passionate and dedicated to my work. I always challenge myself with new tasks and aim to deliver the best person-centred care support for our clients.

I live in Enfield and am always working towards developing my skills through both online and in-house training. I sincerely believe that with time, I will be able to occupy the position of a senior support worker within the Magic Life organisation. My skills and expertise primarily revolve around autism, Asperger's, learning disabilities, and mental health.



My main aim as a support worker is to support individuals with disabilities in achieving their fulfilled life each day.

I am happy to take the lead with the rest of the staff for one of our clients (SH) transformation. This is one of the success stories with his professionals and other stakeholders. We are in partnership with his wellbeing team in rewriting his PBS plan since most of his routine has changed.

Thank you for the offer, and I promise to continue the good work.

Louis Hinds Physical Health (Eating, Exercise) Louis@magiclifeuk.com

I am an accurate, assertive, and adaptable professional who can effectively multitask in challenging situations and meet critical deadlines. I facilitate patient movement and provide daily care support, plan nutritious and healthy meals for clients, and organize daily activities to encourage the health and mental wellness of patients.

As for my hobbies, I love listening to and playing music, watching movies, walking, cooking, and dancing. I also work as an MC and DJ, event promoter, and football coach. All of these activities are what

I use to support people in developing their knowledge, skills, and confidence in my everyday life.



Jean MacLennan
Complex Needs
JeanM@magiclifeuk.com

Jean MacLennan is a Zimbabwean-born and raised Arsenal supporter. She has been a Support Worker at Magic Life for almost four years and is now a Senior Support Worker. Jean has over 8 years of experience in frontline and office administrative roles within health and social care, having worked in both residential and nursing homes. She has cared for individuals with various degrees of mental and physical needs.

Since joining Burlington Lodge, she has found her specialty in working with vulnerable people with complex needs. She has completed her NVQ Level 4 Diploma in Health and Social Care.

Her performance in her work has been noticed by everyone, whether members

of the management team or her colleagues. Jean strives to improve the quality of life of her service users by exploring activities and creating opportunities for them to express their personalities. She has a gentle spirit that is both empathetic and patient. In light of this, as well as her professional achievement and growth, Magic Life's management recently promoted her to the position of Champion in Complex Needs.

Jean will be advising and assisting in areas of complex needs for service users as well as staff across all Magic Life projects. Ensuring everyone has an equal opportunity to succeed, Jean hopes to motivate other residents and staff as they develop the knowledge and expertise around complex needs.



See us at

in partnership with braininhand

in association with National Autistic Society

the autism show

The National Event for Autism

London
9-10 June 2023
ExCeL London

Magic Life is excited to announce its participation in the Autism Show 2023, taking place on the 9th and 10th of June at London ExCeL London. As a leading provider of supported living homes for individuals with autism, Magic Life will have a stand at the event to connect with families, friends, and commissioners looking for high-quality support services.

The Autism Show is an annual event dedicated to providing information, resources, and guidance to families and professionals affected by or working with autism. The event brings together a diverse range of exhibitors, from healthcare professionals and educators to technology developers and support service providers. It's a unique opportunity for attendees to learn about the latest developments in the field and find the best support options available.

The Lions Win 9-2



The Ware Lions take an impressive 9-2 win over Wormley while wearing their new team kit sponsored by Magic Life.

Ablie scored two goals and looked the like a future football superstar sporting his Magic Life jersey. Well done to the Lions. Remember us when your playing for England

The Lions Sporting their new kit

Patient & Persistent

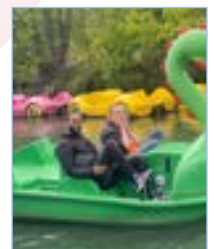
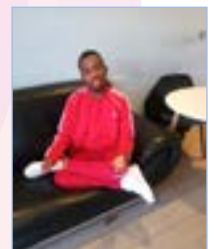
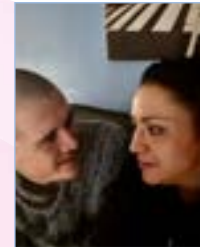
Devonshire Lodge

Being patient, positive, and persistent are all important qualities to have. When we're patient, we're able to wait for things to happen in their own time, without getting frustrated or anxious. When we're positive, we're able to see the good in situations, even when things aren't going our way. And when we're persistent, we're able to keep working towards our goals, even when we face obstacles or setbacks. Together, these qualities can help us achieve great things and lead fulfilling lives.

DB joining us on our group activity to Alexandra Palace is a result of following the 3Ps. I wanted to take a moment to say thank you all for your hard work and dedication. Your efforts have not gone unnoticed, and I am grateful for the contributions you make to our team every day. The work you do is challenging and demanding, but you always rise to the occasion and do it with a positive attitude and a commitment to excellence.

Your hard work and dedication make a real difference in the lives of those we serve, and I am honored to work alongside you. Please know that your contributions are appreciated, and that you are a valued team.

Thank you again for all that you do.



Celebration

171 Harringay Road



HR has been quiet this month. Our residents were very independent, going out into the community to engage in a lot of activities. RL went to Wales for three days, SE and BR went on social leave as well. JC was supported to go out to do his shopping and to withdraw money from the Post Office. Additionally, staff celebrated Easter by painting Easter bunnies (SE participated) and decorating the lounge.



Airplanes

672 High Road



CP, our respite service user, joined our program in April and has settled in remarkably well. We have introduced him to the new staff who will be working with him once he moves into his permanent home at Cherry Tree Lodge in Croydon.

One of CP's great interests is airplanes, particularly old ones such as the Spitfires. We have supported him in visiting the RAF museum at Duxford Airfield, where he had the opportunity to see airplanes in the hangars and even purchased some souvenirs.

CP has also been accompanied by staff to the local barbershop for a haircut and to explore the community, getting to know the area better.

Similarly, CK has also been exploring the community with staff, taking trips on trains and buses to Finsbury Park. CK especially enjoyed riding the escalators up and down.



Good Times Come

52 Bruce Grove

April has been buzzing at the service; everyone has been in really good spirits and engaging very well.

Firstly, a big welcome to JLH, who joined the Magic Life family at Bruce Grove on April 12, 2023. Settling in will be a work in progress, as he has struggled with supported living environments for years. However, we are seeing some progress, and it will take time for him to get to know everyone and feel that it is home.

A big thank you to the staff at BG who made Easter fun, fulfilling, and one of the nicest celebrations so far. The service users were treated to a lovely big Fish Brunch on Good Friday, which they thoroughly enjoyed. On Easter Day, they had the full works with a roast dinner and all of the trimmings. Thanks to Erlinda for decorating the house. Then came the Easter Hunt, where prizes and Easter eggs were hidden around the service for them to find. It is always fun watching them search in some obscure places to find the gifts, but what it does most of all is bring unity to the home. RB, who is normally out in the community, enjoyed the festive celebrations, which was lovely to see.

Easter is approaching, and we know that the service users are looking forward to the fun and games we are organizing. They will be having

a big Easter feast with all of the trimmings, and why not? It's nothing short of what they deserve. Let's continue to make their home feel like home.

The government's extra payment for those struggling on benefits brought joy for BF; he looked dapper in his new tracksuit and trendy trainers. It's very difficult when money is never enough, and then it comes in unexpectedly.

All is going great at the service, with peace and harmony in the home.



Free Ice Cream

Burlington Lodge

The staff and residents of Burlington Lodge send a big shout-out to congratulate Jean, a formidable senior staff member, for her promotion by Magic Life to a Champion's role in the area of Complex Care in the organization. We wish you the best in your performance of additional responsibilities and hope you excel, as everyone in the project is determined to give you the needed support to succeed.

The bright sunny weather of the month of April bid goodbye to winter and ushered in a preparation atmosphere for summer. This transition was announced by the ice-cream van, right in the vicinity of Burlington Lodge. This announcement triggered a powerful appetite for the taste of ice-cream in our residents, and everyone rushed to the gate, all in their wheelchairs, apparently to catch a glimpse and have a taste. The scene of residents riding their wheelchairs in their numbers, with their support workers approaching the ice-cream van, was so impressive that the ice-cream vendor gave all the residents free ice-cream of their flavor choice and refused to collect money. Sam, the leader of the group of residents, expressed their gratitude with a big shout of "Thank you, ice-cream man," demonstrating his social skills to the amazement of all the onlookers.

However, the month was a mixture of sweet and bitter pills because one of our dear residents, Paul, has been hospitalized and is still receiving medical attention. Our hearts go out to Paul, and we wish him a speedy recovery. Residents, especially Sam, mention his name almost every day to show how the house misses him.

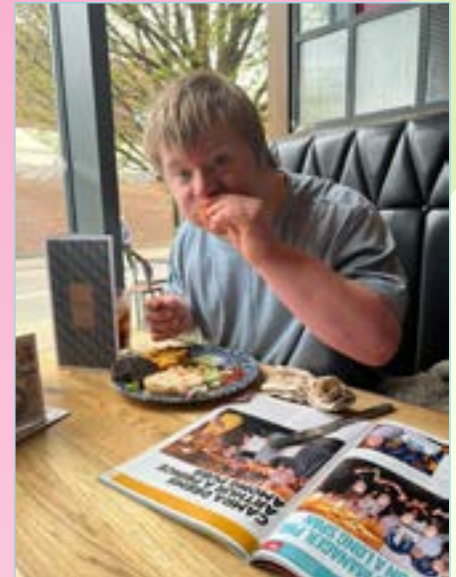
We're ending this report with interesting developments in the month. The residents did not waste time to enjoy and make good use of the favorable weather conditions of the month. You can see photos of some of them enjoying the space at the volleyball court and others at the park sipping canned juice. May everyone continue to provide their quota to make life in Burlington Lodge a memorable one for staff, residents, and their families and friends who visit in the upcoming month.



Gym Fit

The Chapel

- AC: Alban has been active as usual, going to museums and doing art work, practicing yoga, and going to the gym. He visited the Rowan Trust at Cambridge to do some art work, which he really enjoyed.
- Alban exercises three times a week at the gym with a private trainer, managing his weight and enjoying interacting during his exercises. He has set a goal for himself.
- Alban attends art classes weekly with an art teacher. He loves creating art featuring nature, animals, and natural elements.
- Alban engaged with a dog trainer and participated in a lot of dog walking exercises.



Ryan: Ryan enjoys attending and listening to lessons from his tutor, who comes to teach him three times a week. Ryan is able to spell and has been practicing pronouncing some words.

- Ryan has been visiting parks and participating in outdoor gym exercises.



The Chapel

The service at the chapel is stable, and the staff are more proactive. The flowerbed was planted by the service users, who have been responsible for watering it. The flowers are fresh and growing.



New Digs

Cherry Tree Lodge



CP, who recently joined Magic Life, checked out his soon-to-be new home. Aneta gave him a tour of Cherry Tree Lodge in Croydon.

Out & About

95 Greyhound Road



Easter At Bushey Park

Grove Park Road

Grove Park had a wonderful Easter. They celebrated by painting and decorating Easter eggs, making personalized Easter decorations, and participating in decorating the service.

Resident HA assisted the staff with getting the BBQ fire lit and ready for the juicy burgers, sausages, and corn on the cob. She also helped with table decorating and wrapping Easter eggs for each resident.

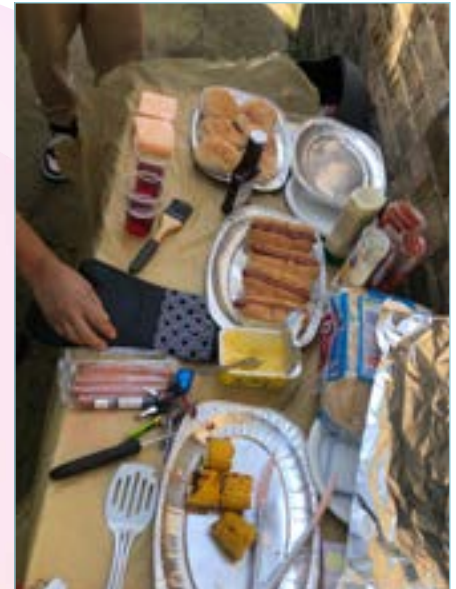
The residents enjoyed stewed chicken, rice, coleslaw, potato salad, BBQ chicken wings, and other munchies that were presented to them.

Each resident was given an Easter egg individually wrapped and tagged with their name on it. They appreciated the personal touch.

Staff DH and AS enjoyed seeing all the residents coming together to celebrate this time of year. It was our pleasure to see the smiles on the residents' faces as they ate and interacted with each other in the garden. Overall, it was a fantastic day made even better because of the good weather we had.

On Easter Monday, the residents at Grove Park had a wonderful time celebrating together. Afterwards, on April 27th, EL went on a day trip to Bushy Park in Richmond.

She enjoyed a hot drink and some cake at the café, then went to see the deer grazing in the park. Later on, EL visited Princess Diana's memorial statue. EL told staff that she had enjoyed the day out and would like to do it more often.



Good Vibes

Winns Mews 2

"All is going well at the service; it has had its challenges this month, but the staff are fully equipped with the skill set to manage anything that comes their way, and they did so extremely well.

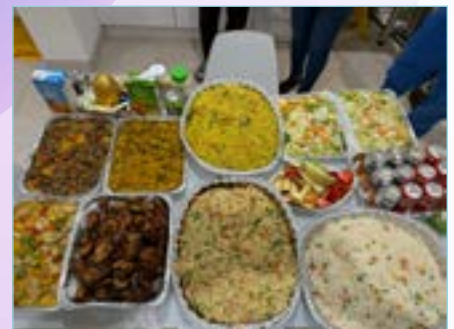
Good Friday was buzzing at Winns. Staff and the service users took pleasure in celebrating the day by cooking a banquet of food. Everyone talked, listened to music, laughed, and had fun. Emem did amazing. She is a committed Deputy manager who had done a night shift but stayed on a few hours more to complete the cooking. The pictures tell the story of the efforts she went to. A BIG thank you to her. The service users were in awe of the lengths that staff went to that made their day. They could not stop thanking the team.

Easter day was also met with lots of food and fun. Celebrating these special days means a lot to us, as some of our service users have not had this opportunity to understand or be involved in them due to being estranged from some family members. Being a part of the Magic Life family means we create that family homely atmosphere and engage them in these events and memorable days.

Now that the weather is warming up, going on trips and taking the service users out to memorable places

will be our aim. RT went to Alexandra Place where he really enjoyed the outdoor space with staff. He was happy.

The month has had some challenges as mentioned. PKP became very unwell with his mental health, and it was a concern for us since he is an important part of No. 2 Winns Mews, having settled really well and built some meaningful relationships with staff and his housemates. He spent a couple of days in North Middlesex Hospital and was then transferred to St. Anne's Hospital. Staff went to spend time with him during his stay so that he knows we care and are there for him. Emem, who he seems to have built a great bond with, also went, and he just kept saying to her, "I want to go home and have Indian curry." When Emem came back to the service, she was overwhelmed. Since we are all human, it is okay to shed tears, and it was heartfelt for her. He was discharged on Friday 28.4.23 and has had his Indian curry and is doing well."



[illegible]

Peter has been enjoying his music community.

Delight

Hale End

in us, and more are in the

Paradise Wildlife Park.

surprise with lunch for staff and

so out much as her ankles have

self with his daily outings; he is
taking out the rubbish.

and forest. He has also been
rides.

this month with his weekly
Wildlife Park, swimming, and

for a week and had a great time

the garden playing table tennis
out for walks.

ing to the fun fair and Paradise
enjoying visits from his mom.

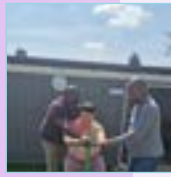
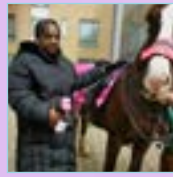
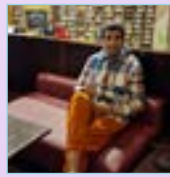
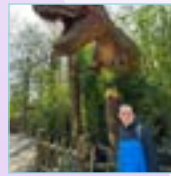
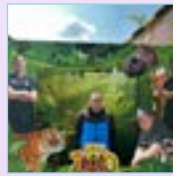
y self (he is such a pleasure to
place up. He loves going out

walking around the garden and
community; it is a pleasure to see.

playing games in the
ers when she's not with her

he went to the forest to feed the

ic lessons and walks out in the



Moving On

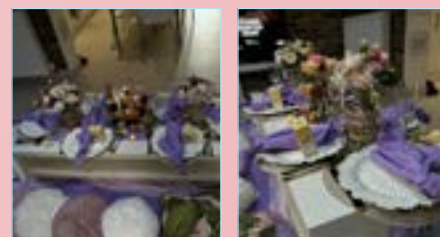
Winns Mews 3

There comes a time when the benefits of the team's hard work are recognized by the outcome of a service users' desire to live independently. You can see that they are more than ready, but the work that is needed to demonstrate this has to be in written form and evidenced. Cheryl has put together a moving-on program for those who feel that they are ready. It was generated by all the things she needed to know as a 21-year-old moving into her own home. Luckily enough, some of us may have family that will give us the support needed, but some are not as fortunate. Therefore, it is our responsibility as support workers and managers to equip them with good knowledge and the tools to do so.

LC has been working with Tamara on the moving-on program that has been created. It consists of many different aspects of living independently. The aim is that with her keyworker, she will source all the extensive information in the plan and create a folder as proof that they have sourced this information and it is readily at hand. Lots of research is needed, but they are sailing through this, which is really impressive. This folder will go with LC when she moves into her new home to enable her to refer to it if she is unsure about something. Regular meetings are currently taking

place to monitor and identify any areas that we need to change or things that we can add to the program. It is going well; they have sailed through a large part of the plan already. We will then present this to her PA to enable her to start bidding for her new home. It has been a great success. Well done, Tamara, for your continued support. LC, you have done an amazing job of working towards your lifelong goals, which has made us very proud.

Easter was the biggest celebration that we have ever had at the service. The staff went all out. Again, a massive thank you to Tamara Davis for the hard work that you put in to create the first indoor Easter picnic for the ladies. It was outstanding, very creative, and beautiful. The ladies were astonished when they arrived at the lounge to see this setup. Food was not an issue; there was so much of it. Staff also contributed by cooking food and adding to what staff had already cooked. Rose cooked some lovely-tasting jerk chicken, Cheryl contributed Caribbean brown stew chicken and rice and peas. There was music, games, and again so much fun at the service. It was a brilliant event that brought much joy to staff and the service users in celebration of Easter.



New Chapter

Manor Lodge

We have had a productive month with our clients at the service, with both good and disappointing moments. The staff has inspired our clients to undertake new challenges, such as putting away their food shopping, going to the lounge from their rooms without staff prompts, and writing down their activity plan and menu for the week.

We said goodbye to one of our clients (MT) who moved to a new placement after almost 3 years with the service.

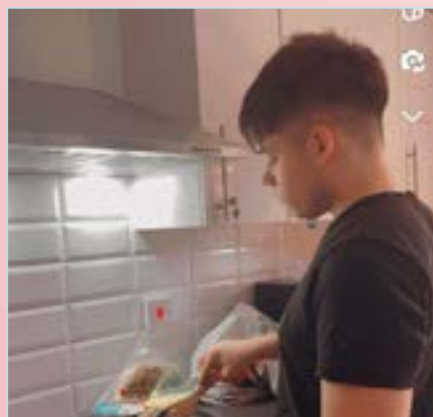
All staff members are continuing to improve their performance through online and in-house training. We continue to support our clients' routine activities in the community, and scheduled visitation by parents and professionals is ongoing.

SH has been doing well. He has been engaging more with staff, housemates, and the community. His daily visit to Sainsbury's is still ongoing, and he looks happy participating in activities with his housemates in the lounge.

MT has moved to a new provider to explore new options in life. We held a farewell party for him at the local Weatherspoon pub, and he thanked the staff for their various roles during his time with the service.

Jo is improving upon his daily skills, and his engagement in

the community and is doing well.



Eid Celebration

Park Lodge



Residents and staff at Park Lodge care home came together recently to celebrate Eid, a special holiday that marks the end of Ramadan, the month of fasting observed by Muslims. The celebration brought people of different cultures and backgrounds together to share in the joy of the occasion.

As part of the celebrations, traditional foods were prepared and shared among the residents and staff, while decorations were put up to create a festive atmosphere. Everyone who participated enjoyed the opportunity to learn more about the significance of Eid and the cultural traditions associated with it.

The combination of the Eid celebrations and the day trip to Southend highlights the importance of creating a sense of community and belonging within care homes. By coming together to celebrate cultural events like Eid and enjoying outings together, residents can feel a sense of belonging and connection to those around them, even if they come from different backgrounds.



Happy Birthday

Park Side

This month, Parkside celebrated the death and resurrection of Jesus Christ with all staff and residents. We celebrated the day with meals and drinks, including roasted chicken and pork, potato salad, and rice. We decorated the lounge with Easter banners, and residents participated in coloring Easter pictures and drawings.

One of our residents, DM, celebrated his 56th birthday on April 17th. He had his favorite meal, roasted pork and potatoes, and staff and residents wished him a happy birthday. SM, SR, and PC stayed in the garden with him, and he enjoyed cutting his cake and sharing it with everyone.

ED visited the new museum in Enfield. He loves bus rides, so he went on the bus with staff. He saw kitchen equipment and food used during the war found in Enfield. He tried on the war suits and helmet, which were very heavy. The museum had a bone of a baby mammoth found in Bush Hill Park.

After the museum, ED treated himself to fish and chips at the restaurant before coming home. He had a wonderful day and also enjoyed ice cream in the local park.



Locations Magic Life

Magic Life Head Office **5-11 Green Lanes, London, N13 4TN**

Bruce Grove
52 Bruce Grove, London, N17 6RN

Burlington Lodge
21-29 Tewkesbury Road, London, N15 6SE

Devonshire Lodge
139 Devonshire Hill Lane, London, N17 7NL

Greyhound Road
95 Greyhound Road, London, N17 6XR

Grove Park Road
57 Grove Park Road, London, N15 4SL

Harringay Road
171 Harringay Road, London, N15 3HP

High Road Tottenham
672 High Road, London, N17 0AB

Manor Lodge
3 Cedar Close, Potters Bar, Hertfordshire, EN6 1EW

Maple Lodge & Cedar Lodge
271-275 Hale End Road, Woodford Green, IG8 9NB

NorthLands
10 Northlands, Potters Bar, Hertfordshire, EN6 5DF

Park Side
Quadrant Court, 2a Park Avenue, London, N18 2UH

Park Lodge
8B Park Road, London, N18 2UT

The Chapel
14 Chapel Row, Bishop's Stortford, CM23 3SE

Winns Mews
2,3,4 & 5 Winns Mews, London, N15 4FF

The Hamptons
403 Eagle Way, Peterborough, PE78EG

Cherry Tree Lodge
185 London Road, Croydon CR0 2WN, UK

**Visit <https://magiclifeuk.com> for further
details or call Raff on 0208 826 4348**



Magic Life offer's
a range of
Services for people
who require
supported living
accommodation

- Learning Disabilities
- Autism
- Mental Health Needs
- Respite
- Acquired Brain Injury
- Behaviours that are deemed to be Challenging
- Physical Disabilities
- Dual Diagnosis
- EUPD Support
- Forensic Support

