

Magic Life

Sharing Experiences

- 
- A New Start
 - Jamaican Fruit
 - Tate Inspired
 - Winter Seaside
 - Moving On
 - Movie Magic
 - Happy Birthday
 - Chief Comedian
 - The Impossible Is Possible
 - Full House
 - Setting Goals
 - Spa Day
 - Re Booting
 - Our New Home
 - Magic Life Locations

February 2023 Edition

A New Start

Sharing Experiences

In this month's edition of Magic Life magazine, we would like to acknowledge the departure of Eamonn Cummings, the former Director of Operations. We thank him for his contributions and wish him well in his future endeavours.

We are excited to welcome new members to the Magic Life team across all our sites, including Aneta & Karleen, our new Service Managers.

Aneta will be managing our upcoming site, Cherry Tree Lodge in Croydon and Karleen will be managing Greyhound Road and Northlands. The site is set to open in late February or early March, and we can't wait for everyone to see it.



We would also like to thank everyone who participated in the short video about the role of a support worker.

This video will help people who are considering joining Magic Life as a support worker gain a better understanding of the role. Additionally, we would like to introduce Alf Oliver, who has joined the team at the head office.

In this month's magazine, we catch up with Sonia Powell



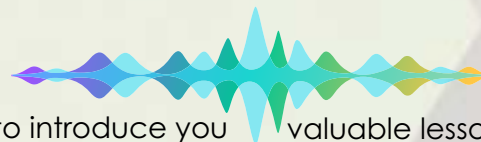
Watch Our Video On Youtube

on the Magic Life podcast, where she shares her journey into social care. We would like to invite all of our readers to take part in the Magic Life podcast. We would love to hear your views and learn more about your personal and professional experiences with Magic Life. Lastly, we would like to express our gratitude to everyone

who has contributed to the magazine with their photos and write-ups. Your images and write-ups bring joy to our readers and showcase the amazing work you all do in making the lives of the people we support fun and filled with activities. Thank you for making Magic Life magazine a success.

Sonia Powell Podcast

<https://magiclifeuk.com/magic-life-podcasts/>



I am excited to introduce you to Sonia Powell, the Quality Assurance Manager for Magic Life. Join us as we delve into Sonia's journey in the social care industry, starting from her beginnings in Florida and her move back to Jamaica before finally settling in the UK. With over a decade of experience in the field, Sonia shares her insights and

valuable lessons learned as she climbed the ranks from a care worker to a manager and now to her current role as Quality Assurance Manager. Tune in to hear about Sonia's dedication and passion for improving the lives of those in her care and her relentless pursuit of excellence.

Jamaican Fruit

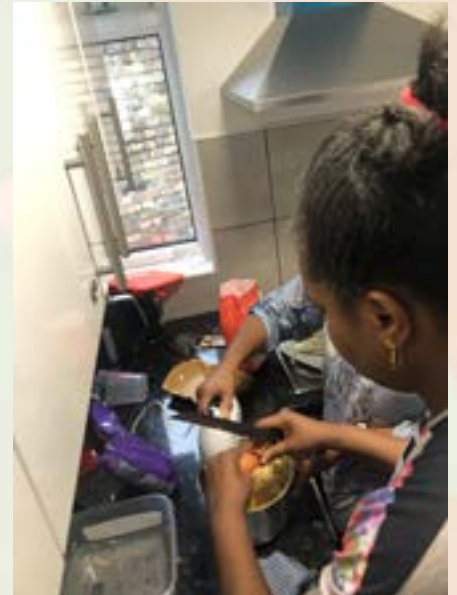
Grove Park Road

NR is embracing new culinary experiences with staff support. NR expressed enjoyment in trying new foods.

EL baked a delicious traditional Jamaican fruit cake for a cake baking activity. The cake contained rum, wine, dried fruits, and authentic spices. EL and fellow residents enjoyed the finished product.

DR visited her daughter who recently had a birthday. They spent a lovely day in the park, enjoying treats provided by DR.

ET has been proactive with her personal care. She attended a GP appointment, cleaned her room, did laundry, and prepared several meals.



Tate Inspired

Park Side

Park Side is off to a great start this new year with residents showcasing their positive spirits. Pauline has overcome challenges and is thriving, as evidenced by her shopping trip to Wood Green and Brent Cross. She took the bus 102 and enjoyed the journey, stopping for coffee with her auntie. Pauline also visited the Tate Modern Museum, which inspired her to write a poem.

Sarah takes pride in her appearance and enjoys pampering at the local nail bar. Errol has been busy with trips to the day center in Shordich, where he's taken up an interest in math. He even asks staff for math problems to solve and takes pride in washing up after meals. Staff are finding new ways to support him, including bringing a wash basin to him.

Derek looks forward to his weekly shopping trip to Asda and loves grabbing chips from the local café before returning to Park Side. The residents are excited for new adventures in February and Park Side continues to provide a supportive environment for growth and personal development.



PAULINE CARR
8 QUADRANT COURT
2A PARK AVENUE
M18 2UH
MAGIC LIFE



WHEN THE MOON SHOWS NO LIGHT, THE SUN
WILL COME OUT
THE STARS WILL GO BACK AS THE NIGHT DRAWS
ACLOSE
THE MIST IN THE RAIN WILL PASS THROUGH
THE DAY
WHILE WE WALK DOWN THE DARK ALONG
THE WATERS BY
THE PONDS SHINING
THE FACES TO MAKE IT SEE
WHILE THE DUCKS SPLASH BY
AS THE PEOPLE PASS BY THE DAY DRAWS ON
AS THE NIGHT DRAWS IN THE MOON COMES OUT
WITH THE STARS ABOVE FOR THE NIGHT TIME TO
SLEEP
AS THE STARS SHINE ABOVE, THE REFLECTION OF
THE MOON SHINES BELOW
THE RAIN DROPS WILL DROP AND FRESHEN UP FOR
THE MORNING TO COME
AS WE AWAKE THE START OF THE DAY IS NEAR



Winter Seaside

Park Lodge

CR and SGF enjoyed a day trip to Brighton this month. The sun was out, and they spent the day walking on the beach and bonding with each other and staff. SGF even found a beautiful pebble which he brought home. They also had fresh fish and chips with unlimited chips refills. They then headed to the arcade on the pier to play air hockey against staff. SGF and CR made a great team and beat staff 6-5! After that, they played coin machines and won lots of sweets. A great bonding experience for everyone.



Volunteering

As usual, CR has kept himself busy this month. On top of his usual activities, he recently started volunteering in a primary school in Islington. He is very involved in this role, going there twice a week. At the school, he helps set up classes, supports the teachers and plays with the children. Volunteering with children and being active is a great achievement and he enjoys it. He was a little nervous before his first day but now feels more confident going there. He hopes this experience will help him get a paid job in the future. Well done CR.



Moving On

672 High Road

The new year has started on a positive note with the amazing news that Mica will be moving to Winns Mews. There she will be more independent and in control of her life but with guidance from the team at Winns Mews. Although we are sad to see her go we are proud of the amazing progress she has made. The whole team at 672 wish her the very best and welcome her to visit us when ever she likes.

Chris enjoys arranging color tiles in the morning to start his day and interact with staff. This activity helps him to stay stimulated and exercise daily after making his fresh juice. Chris also likes to be involved in preparing his meals and doing laundry, as he values clean clothes.

MFE found shredding paper and cooking spaghetti Bolognese therapeutic. She made great progress at 672 and has now moved to Winns Mews to continue developing her skills in a new setting. MFE celebrated her departure with a leaving party attended by staff and residents.

672 Service:

The service is stable and focuses on supporting individuals with staff commitment and dedication. Two individuals, PH and Mica, moved out of the service in January to continue their independence. PH lost 70 kilos before Leaving and received a complimentary email from his family. Mica had positive comments when informed of her move to another service. The service is expecting two new individuals to join soon.



Movie Magic

Manor Place

The start of 2023 was tough due to strikes in many government sectors and challenging weather. To keep our clients safe, staff took precautions and provided support during the cold period. Almost all clients completed their annual health check-ups and are participating in various activities, such as attending football games, training, swimming, cooking, shopping, and job search.

SH continues to improve his development with regular home visits and attending Watford football team home games. He also engages in daily activities in the community. He enjoys shopping at Sainsbury and sometimes chats with old friends there. He also spends time at the Weatherspoon pub with staff on Tuesday, Wednesday and Saturday for dinner.

MT had a successful month with visits to Elstree Studios and shopping at Borehamwood. He had a picture taken with actor Mathew Morrison and was supported to see other actors at the studio. MT was also supported by a family friend to watch Chesham home games and resumed weekend training with the St. Albans youth disability team.

He has plans for a London tour next month which he is looking forward to.

Jo has become more independent with cooking and shopping and his home visits are crucial to his well-being. He has weekly swimming and daily walks, and was supported to buy new trainers and get his eyesight checked. He enjoys his routine of shopping at Tesco and Sainsbury and relaxing in the games room after a day out in the community.

GS is being supported in his job search with daily applications. He has searched for jobs at restaurants in Potters Bar and has been to a few interviews and look promising.



Happy Birthday

Northlands

There is nothing better than
celebrating your birthday with
a meal out and topping it off
with a amazing icecream.
Happy Birthday CW



Chief Comedian

Burlington Lodge

The year 2023 has begun in a grand style for all staff and residents of Burlington Lodge. Interestingly, the items of gift received by residents were for special purposes.

As an instant, Sam, the chief comedian and musician among the residents was presented with a unique microphone. All of us in Burlington Lodge were in music and dancing mood when Sam took over the stage with his microphone singing all kinds of songs ranging from raggae, hip hop, rock, funky and classical music sending the house 'on fire'. If you are a spectator, this is the time you watch different dancing skills of ancient and modern times from staff Boakye, Jozef, Jean, Otto and others displaying their talents to the lyrics and beat from Sam and his band boys: Jamie, Michael, Paul, whiles Elijah playing drums using his special birds vocalisation. In fact, even Michael Jackson would not be able to entertain better than Burlington Music Band.

The great fun we had this January was not restricted to only music and dance, residents and staff seized the opportunity to visit restaurants and pubs in the community for lunch and dinners at sightseeing places like Woodberry Down and McDonald's. Paul was on top of the group, he seemed to enjoy the many visits made to the pubs for his dinner.

The story will not be complete without mentioning Junior's speech and language practice sessions. He was impressive, able to mention some words clearly to the amazement of everyone, some of those words even included words with 2 or more syllables, for example he said the word 'everything' clearly.

In addition, Junior received a strong, metal, standing frame from his team of Physiotherapy, enabling him to undertake daily



Happy Birthday

physio exercise adding to his achievements right at start of the year.

Michael had a special present from his auntie, showing the family has first hand knowledge of Michael's wishes and preferences as they donated Frequency modulation Radio. This gift has brought calmness in the house as you will always see Michael stuck to his radio tuning to variety of musical radio stations of diverse language

and culture.

The month came to a climax when Sam's birthday was celebrated in a grand style, music, dancing and partying for every tom-dick-and-harry at Burlington Lodge. Congratulations Sam and all co-residents, your happiness is contagious, infecting all residents and staff with satisfying and rewarding moments at the genesis of the year 2023.





Devonshire Lodge

The Impossible Is Possible

DB adventured out to wood green. This is the first time in years that she has travelled on a bus with staff. Since then, her confidence and trust with staff has grown immensely and started to initiate and communicate with staff when she would like to go out. This has had a positive impact on her and has improved her quality of life. She is now visiting the shops at least 4-5 days a week with the support of staff.

This has brought hope and joy to the service and that the impossible is possible. Tinsay who has worked well with her in the past years with activities was able to get her excited to go out again, we will never know the reasons behind her growth of confidence but have accepted that it is her own will and initiation of when she would like to go out.

We would like to extend our appreciation to Tinsay and staff that are continuing with the consistency of supporting her.

The Positive Work Continues

PC celebrated his 35th birthday with a trip to Milton Keynes inflatable park accompanied by SS and OB.

Staff supporting BKD have reduced the limitation set around him. This has allowed him to enjoy more freedom when in the community and build trusting relationship with staff. His confidence has grown a great deal since coming to Devonshire Lodge, he has managed to shop in nisa and dine out locally. Massive improvements have been identified and we would like to thank Lawson and the staff continuing to improve his quality of life.

We would like to extend our appreciation to all staff at DL and we look forward to the year ahead.

Full House

Hale End

Birthday Delight For Raphael

Hale End is nearly bursting at the seams, we have 1 piece of the jigsaw Puzzle missing, but hopefully fingers crossed we get our Anjan back here permanently at Hale End . So now we have 2 managers here at Hale End, Julie has stepped up to be the second manager, as we are basically full up at the inn, and we are looking for a devoted Deputy to come and join the team, We also have 2 staff members that have been promoted to seniors (Michael and Yaa) Well done for all your hard work you 2

Patsy and I would like to thank Raf for doing a great job filling Hale End up, and what a great job he has done.

We now have 12 lovely residents that all have their own personalities, and boy oh boy some have got some funny personalities especially our Adrian who keeps

everyone on their toes. Claire who joined us in December has claimed Adrian as her boyfriend and will not leave him alone, Adrian just goes along with her for short spells saying he loves her, then tells her go home now Claire Poor Claire she doesn't know if she is coming or going with him. Peter who recently joined us, has settled in so well, he is loving his days out, bus rides and even joining the other peers in cedar lounge with a smile on his face, he seems to be enjoying the atmosphere around him .

We have some new starters as well that have just joined us and are showing some good signs of commitment, hopefully it stays that way.

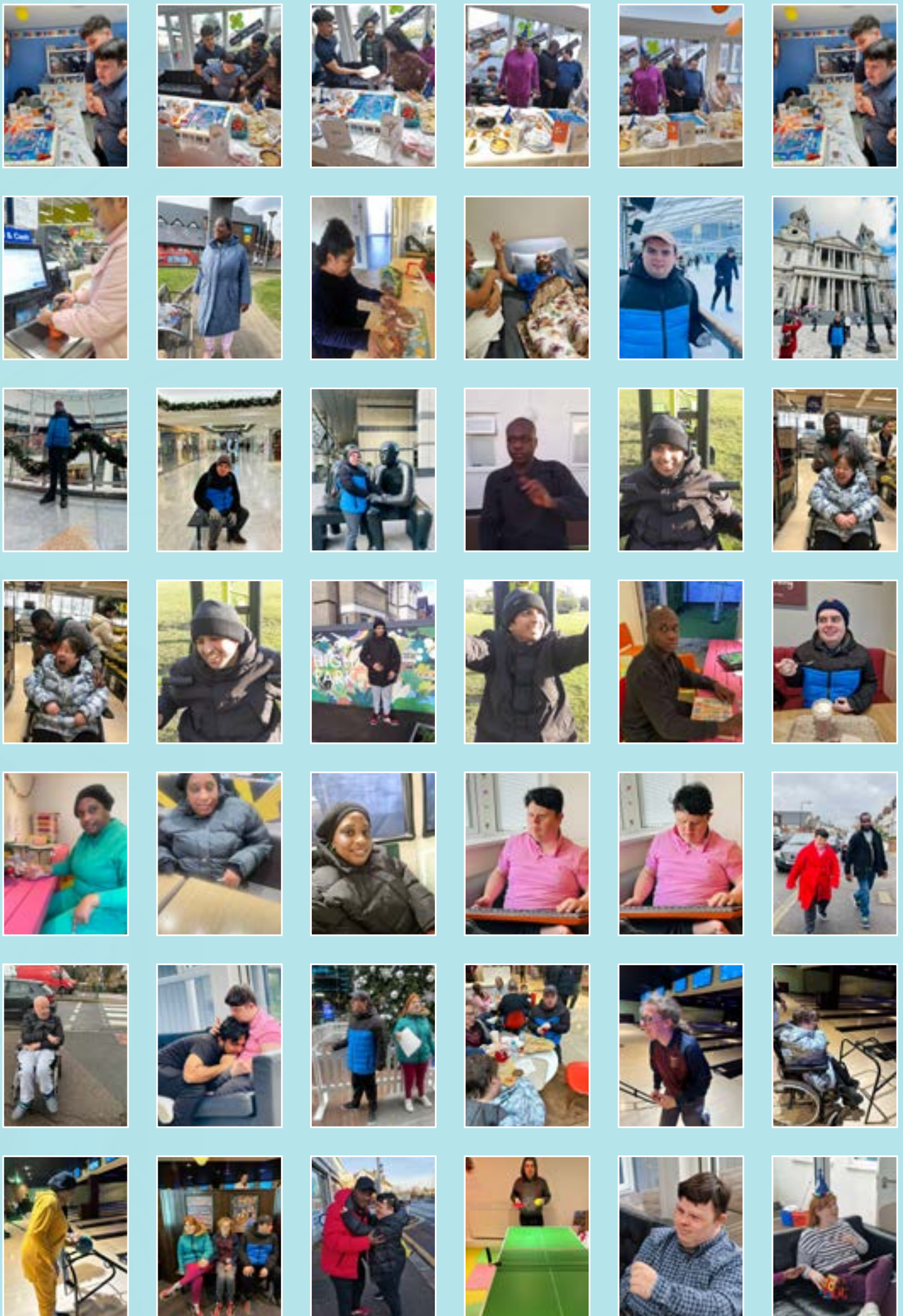
We are also interviewing a few more people, so hopefully that should take our agency

usage down (and I bet head office will be pleased with

that).

Finally, Julie is now able to have a day off work as our Alicia has now accepted Faustina to assist her after so long





Setting Goals

Bruce Grove

The year has started well and everyone is doing great and there is a positive mood in Bruce Grove.

Bruce Grove has faced some challenges in the past year, but with the help of Raf and consistent efforts, they were able to raise awareness and bring about action to protect a vulnerable service user. The team has shown resilience and

professionalism in handling a difficult situation, but it has also been an emotional journey for them.

It's great to see that BF is making positive changes and showing growth in his confidence and ability to engage with the community. The team at Bruce Grove is proud of him and will continue to support and encourage him. It's wonderful that he has a goal of working in a kitchen cooking for the homeless and the team will work towards helping him achieve it. Good luck to BF!

171 Harringay Road

Re Booting

Winns Mews 2

With the holiday season now in the past, it's time for the Magic Life Family team to plan for 2023. The start of the year brought some changes, but we need to stay positive and adapt.

I'd like to extend a warm welcome to our new Deputy Manager, Emem Ekenam. I wish her all the best in her new role and I'm sure she will excel. Emem has already demonstrated her skills and shared valuable ideas that will help me improve our already successful service.

At the moment, things are stable and all service users are doing well. However, HN has been facing difficulties which affected the service users, but we now understand him better and are better equipped to manage his needs. The male service users are doing great and showing positive growth, which brings joy to our staff. For example, PKP is communicating much better after staff helped him learn English, and he now confidently goes shopping on his own with the help of shopkeepers who speak his dialect.

RT has also made great strides and is now very independent. We are proud of his progress, as he expresses his needs confidently, prepares his own meals, and can even use the scanning machine at the supermarket. These seemingly small accomplishments are

major achievements for the service users and give them new experiences.

Finally, I want to mention KF, who continues to settle into the service and surprises us each month with his growth. For example, he recently played FIFA with RT in the lounge, which was a first and a proud moment for us. KF is truly a blessing to the service



Our New Home

Winns Mews 4

Welcome to No 4 Winns Mews, our newly opened service on December 12th, 22. We are fully staffed and now open for business, with two service users currently residing there and soon to be four.

GI and JH, who have settled in nicely, have been enjoying their time with us and are doing well.

We made sure that their Christmas was memorable by preparing the house, including setting up the Christmas tree, which added a warm and homely feel. They celebrated with both staff and family members.

Our focus is on teaching the service users new skills and helping them establish a routine for their week. They have shown an interest in cooking and food, which is great. Although there may be some adjustments to be made, they are adapting well to their new surroundings. We would like to extend a warm welcome to our new senior support worker, Abiodun, who has been a valuable addition to the team. She has hit the ground running and made significant contributions to our well-organized and structured service. Our staff from other services are also learning the ropes and have shown a willingness to learn new skills.



Magic Life Locations

Magic Life Head Office **5-11 Green Lanes, London, N13 4TN**

Bruce Grove
52 Bruce Grove, London, N17 6RN

Burlington Lodge
21-29 Tewkesbury Road, London, N15 6SE

Devonshire Lodge
139 Devonshire Hill Lane, London, N17 7NL

Greyhound Road
95 Greyhound Road, London, N17 6XR

Grove Park Road
57 Grove Park Road, London, N15 4SL

Harringay Road
171 Harringay Road, London, N15 3HP

High Road Tottenham
672 High Road, London, N17 0AB

Manor Lodge
3 Cedar Close, Potters Bar, Hertfordshire, EN6 1EW

Maple Lodge & Cedar Lodge
271-275 Hale End Road, Woodford Green, IG8 9NB

Northlands
10 Northlands, Potters Bar, Hertfordshire, EN6 5DF

Park Side
Quadrant Court, 2a Park Avenue, London, N18 2UH

Park Lodge
8B Park Road, London, N18 2UT

The Chapel
14 Chapel Row, Bishop's Stortford, CM23 3SE

Winns Mews
2,3,4 & 5 Winns Mews, London, N15 4FF

New Sites Coming Soon

Visit <https://magiclifeuk.com> for further details or call Raff on 0208 826 4348



Magic Life offer's a range of Services for people who require supported living accommodation

- Learning Disabilities
- Autism
- Mental Health Needs
- Respite
- Acquired Brain Injury
- Behaviours that are deemed to be Challenging
- Physical Disabilities
- Dual Diagnosis
- EUPD Support
- Forensic Support
- Long Term Support

To discuss how Magic Life can help please

Call Raff Baccus
Business Development
Manager on
0208 826 4348



<https://magiclifeuk.com>

